

Event Race Instructions RYA National Championship **‘Isle of Wight Challenge’**

The Royal Lymington Yacht Club



Class ZCR / P750
Saturday 19th July 2014

Approved by



AWAITING F

APPROVAL

Organised By:

M2M Racing Club Ltd

Fiona Pascoe – Organiser

Tracey Armstrong – Administration James Tapp – Coordinator
Microlink House Brickfield Lane Chandlers Ford Hampshire SO53 4DP
fiona@thunderuk.com Tel: 02380 240388 / 07795618701

In collaboration with:

ZapCat Racing (UK) Ltd

Jamie Stickler & James Millest - Directors

Unit 2 The Forge Lockgate Road Sidlesham West Sussex PO20 7QE
Secretary@zapcat-racing.com Faye Stickler 07920 762468

In association with:

The Royal Lymington Yacht Club

Kirsty Timmis - Events & Systems Manager

Tel: 01590 672677 Kirsty@rlymyc.org.uk



RISK STATEMENT

Powerboat Racing is by its nature a dangerous sport and therefore inherently involves an element of risk.

By participating in or becoming involved with Powerboat Racing organised by RYA affiliated clubs either as a participant, team member or otherwise individuals agree and acknowledge that:

- (i) they are aware of the inherent risk involved in the sport and accept responsibility for exposing themselves to such inherent risk, including risks to their person, their property, drowning, hypothermia, collision injuries burns and other physical injuries as well as possible death
- (ii) they have satisfied themselves that they have the necessary skill and knowledge to take part in the event and deal with the conditions that may arise in the course of a race
- (iii) they will not participate in the event whilst under the undue influence of alcohol, drugs or whilst otherwise unfit to participate
- (iv) they are responsible for the safety of themselves their crew their boat and their property whether afloat or ashore
- (v) the management of their boat including insurance is solely their responsibility
- (vi) Scrutineering does not constitute a condition survey of the boat and it is solely their responsibility to decide whether or not to start or to continue in any powerboat race.
- (vii) ensuring the efficiency and suitability of the helmets and racing vests worn is solely their responsibility
- (viii) the provision of a race management team, patrol boats and other volunteers by the event organisers does not relieve them of their responsibilities
- (ix) the provision of patrol boat cover is limited to such assistance particularly in extreme weather conditions as can be practically provided in the circumstances
- (x) to be bound by the conditions of the Race Entry Form, Racing Instructions and the General Competition Rules of the UIM and the RYA
- (xi) they will accept the decisions of the organising committee and officials nominated by the organising committee.

INDEMNITY

Participants in the event will be required on signing on to the event to save harmless and keep indemnified:

- (a) The owners of the premises at which the event is held;
 - (b) The organising club, the sponsors and the RYA and their respective officials, servants and agents; and,
 - (c) The other boat owners, drivers, passengers or mechanics engaged in the meeting,
- (Together with the "Indemnified Parties") AGAINST all actions, claims, costs, expenses and demands in respect of loss of or damage to the property of or personal injury sustained to the Indemnified Parties to the extent caused by the participants, their crew, their boat, their mechanics, support team, representatives or agents.

IMPORTANT NOTE: Persons under the age of 18 must have written authority signed by either Parent or Guardian.

THE RESPONSIBILITY FOR A TEAM'S DECISION TO PARTICIPATE IN A RACE OR TO CONTINUE RACING IS THEIRS ALONE

1 EVENT APPROVAL

This Event has been approved by the Royal Yachting Association, the National Governing Body for Offshore Powerboat Racing in the United Kingdom and Northern Ireland.

2 COMPETITORS RESPONSIBILITY

Competitors must read the Risk Statement and Indemnity at the front of these race instructions as well as the safety information at the back. By signing the race entry form and the RYA official signing on form at the event all competitors are bound by the rules contained in RYA PB1 2014 or UIM Rules where applicable. It is the competitor's sole responsibility to decide whether or not to start or continue in a race once passed scrutineering. Competitor must read and fully understand

a) Start procedures:

b) Overtaking rules

c) Flag procedures

d) Emergency assist procedures

3 EVENT SECRETARIES

Name: Faye Stickler (ZapCats)
ZapCat Racing (UK) Ltd
Unit 2 the Forge, Lockgate Road Sidlesham
West Sussex PO20 7QE
Secretary@zapcat-racing.com

Name: Tracey Armstrong (ThunderCats)
Address: Microlink House Brickfield Lane Chandlers Ford Hampshire SO534DP
Telephone: 02380 240388
Email: tracey.armstrong@thunderuk.com

4 EVENT ORGANISING COMMITTEE

ZapCats: Faye & Jamie Stickler, James Millest
ThunderCats: Fiona Pascoe, James Tapp and Tracey Armstrong

5 RACE COMMITTEE

Officer Of the Day	Fiona Pascoe
Safety Officer	Steve Gallienne
Race Secretary	Irene Sheffield
Chief Scrutineer	Jamie Stickler
Chief Time keeper	Andrea Drew, Kelly Walsh
Chief Marshal	David Drew,
Medical Officer	Daniel Major

6 RACE OFFICIALS

Officer of the Day	Fiona Pascoe
Ass OOD	Andrew Altendorff
Safety Officer	Steve Gallienne
Ass Safety Officer	James Millest
Race Secretary	Irene Sheffield
Race Administration	Tracey Armstrong
Chief Scrutineer	Jamie Stickler
Scrutineer	Martin Jerome
Trainee Scrutineer/s	Steve Wallace, Daren Ford
Chief Marshal	David Drew
Boson / Logistics	Mike Cousins
Marshall	Vio Sarco
Chief Time Keeper/Lap Counter	Andrea Drew
Time Keepers	Annette Cousins, Kelly Walsh, Harriet Moger
Medical Officer	Daniel Major, Suzanne Gaskell
Officials in Training	Steve Wallace, Tracey Armstrong
Media Officer	John Moore

7 RACE JURY (Minimum 3 Persons including RYA/UIM Commissioner if appointed)
Chairperson Dave Drew John Moore James Tapp

8 RACE STATUS
NATIONAL

9 LICENCE STATUS

Club: RYA Event Licences or better for all crew – minimum 2 per boat.
National: RYA National Licences for all competitors.
International: International Licences

Minimum Age: Minimum Age Limit as Per PB1 Class Rules

NB// Event Licence Requirements as per PB1, please note changes for 2014. For competitors who do not hold an RYA Full licence an Event Licence with medical Self Declaration maximum of 2 in one year or an RYA Annual Powerboat Event Licence

10 RULES AND REGULATIONS:

The races will be run under current rules as stated in RYA PB1 2014 together with these Race Instructions and any other instructions issued before or at Drivers' Briefings or in Race Bulletins.

The Organisers reserve the right to change these Instructions at any time for safety reasons, provided that any change will be in accordance with the current rules. Any changes will be notified to competitors in a Race Bulletin and, if possible, announced at Drivers' Briefing.

Organisers have the right to refuse any boat which they consider unsuitable and/or which does not conform to the requirements of the present Rules.

Any infringement of the Rules or of the Race Instructions, or instructions issued at Drivers' Briefings or in race Bulletins may lead to disqualification or other penalties being applied by the organising club.

11 CANCELLATION

The Organisers may cancel or postpone the event or a race at any time in the event of bad weather, equipment failure or otherwise. The entry fee is not refundable unless specified by event organisers.

12 TIMETABLE

Saturday 19th July 2014	From	Until
Drivers Arrive From		
Race Administration Open	08.30am	
Signing In	09.00am	
Scrutineering on land in dry pit area	09.00am	
Scrutineering on Pontoons	10.00am	
Safety Briefing	10.30am	
Drivers Briefing	11.00am	
Launching	10.00am	11.00am
Official Practice	N/A	
Leave for Race Start – follow start boat	12.00 noon	
Race Start	12.15pm	Approx. 14.30
Return from race into Lymington at slow	Speed – 4 knots	
Take boats out of water on return then	Lunch available at	The RLymYC
Prize Giving	16.00 RLymYC	

Tide Times

	High	Low	High
Saturday 19th July	2.9m 05:20hrs	1.0m 10:05hrs	2.9m 18:00

13 RACE ADMINISTRATION

Royal Lymington Yacht Club Bath Road Lymington
Hampshire SO41 3SE Tel: 01590 672677

14 REGISTRATION

On arrival at the race site, all crew members must report immediately to the Race Administration and shall sign the RYA indemnity form. Crew members must produce all documentation required under RYA Class Rules. Crews not in possession of the correct paperwork will not be allowed to race.

15 PIT AREAS, PARKING & SPECIAL CONDITIONS

WET PITS: Must launch by hand (no vehicles) at 10am promptly as directed by the Chief Marshall and raft the boats on the North End of Dan Bran Pontoon.

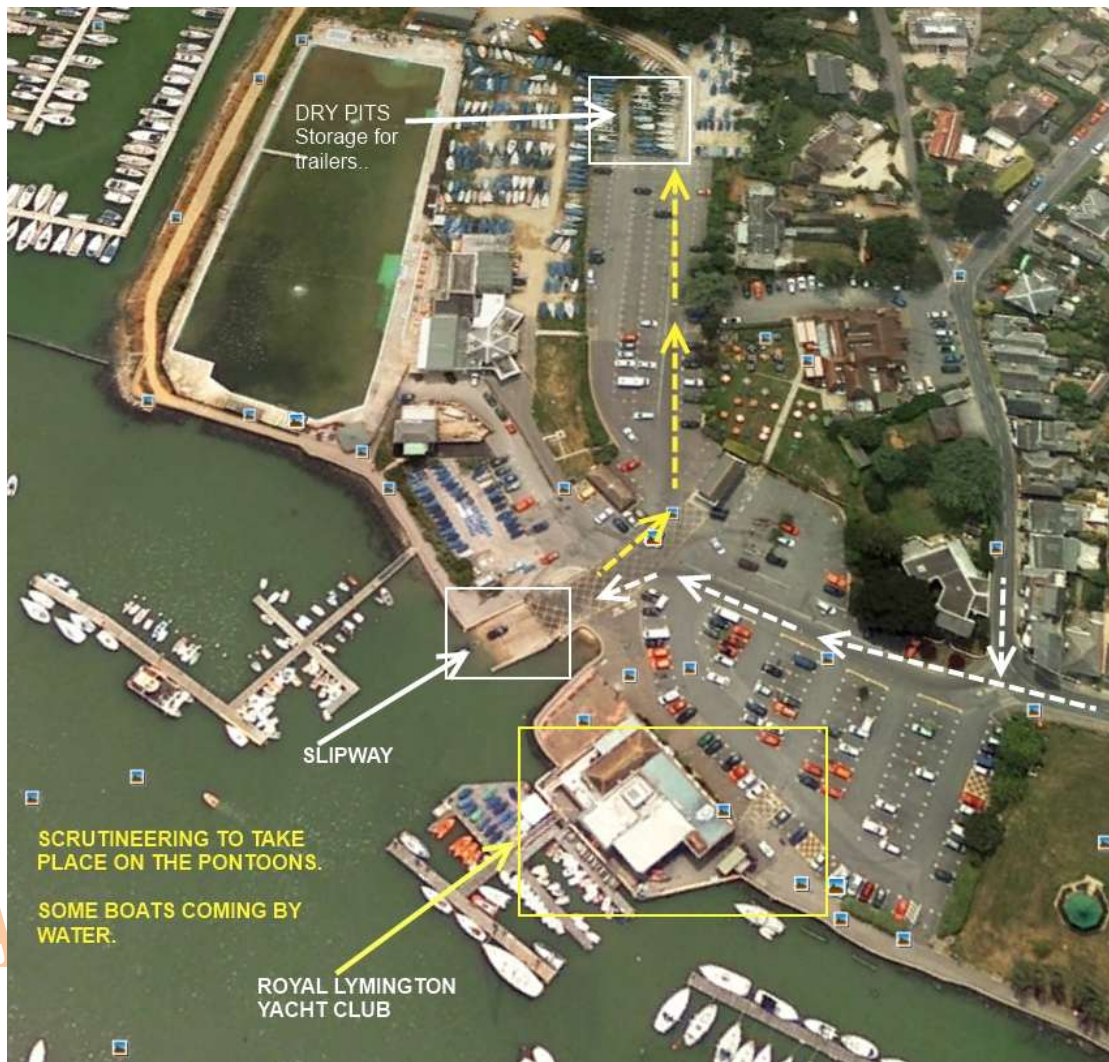
DRY PITS: As per diagram - all cars will need to be put in main public and pay the charges

CAR PARK FOR CARS AND VANS:



FINAL RYA APPROVAL

Car Park	Town Quay
Short Stay Limit	3 hours
Short Stay Bays	30
Long Stay Limit	20 hours
Long Stay Bays	24
Disabled Bays	3
Public Toilets	Yes
Free Parking	No
Charges Apply	6am - 10pm every day incl bank holidays
Up to 1 Hour	80p (1 Nov - 29 Feb)
Up to 2 Hours	£1.80
Up to 4 Hours	£4.00
Up to 6 Hours	£6.00
Up to 20 Hours	£8.00



DRY PIT
AREA FOR
TRAILERS
ONLY.

ROVAL

The Dan Bran Pontoon will be available for boats from 10am on Saturday. Please raft the inflatable boats so we can get everyone on including the Safety / Patrol boats.

16 FUELLING ARRANGEMENTS

All fuel arrangements must be arranged prior to arrival and race boats ready to race.

No transfer of fuel is permitted in the pit areas or launching areas.

Refuelling is ONLY permitted in the designated Fuel Pit Area.

All smoking of any type is prohibited in both pit and launching areas.

This must be adhered to at all times, offenders will be penalised.

17 PRE-RACE SCRUTINEERING

In accordance with Class specific rules in PB1 2014 as per circuit long haul requirements.

18 LAUNCHING

Launching is the boat crew's responsibility and please be cognisant that others will be using the slipway as there is a dingy regatta. The slip will be available for the use of our event between 10am – 11am thereafter the slip will be closed for the Regatta for 2 hours.

Competitors are reminded to comply with all local regulations concerning the use of the slipway. Details of the marshalling area and procedures will be given at drivers briefing. Please remember to keep to 4 knots whilst in the River. All class specific rules governing launching and recovery apply at all times

19 OFFICIAL PRACTICE ARRANGEMENTS **There is no official practice for this event**

20 DRIVERS BRIEFING

Mandatory Drivers Briefing will take place in the: **RLymYC - Room overlooking the balcony**



Signing-in will commence 15 minutes before the Briefing. All crew for each race boat must sign in to the briefing by the start time and attend the entire briefing. A Roll Call may be held. The start of drivers briefing marks the end of the eligibility protest period and the Jury members will be introduced. Penalty for absence may be disqualification from starting the race or other penalties as defined in Class Rules or by the race organisers. Breathalyser and Drug tests may be given.

21 NOISE AND SPEED RESTRICTIONS

Competitors must obey all local regulations and Bye Laws relating to excessive speed and noise. All competitors are requested to refrain from starting their engines unless absolutely necessary before proceeding to the race or official practice sessions. Failure to observe local regulations will result in penalties being applied.

22 ROLLING STARTS, STANDING STARTS, BEACH STARTS, CLASS SPECIFIC STARTS

Full details of the starting procedure will be given at Drivers Briefing however see below

DEEP WATER STARTS: Muster area will be defined in race instructions and explained at the drivers briefing, two minutes before the start of the race the start boat will raise and continue to display a 'Yellow Flag', the boats must proceed to line up side by side. The start boat will then proceed across in front of the fleet and then returns back across the front of the fleet; when the start boat has crossed the fleet for the second time it will turn to face the racing line, the yellow flag will go down and the green raised. If the sea-state is rough a 'Rolling start will need to be used, the boats are to keep 20m behind the start boat until the green flag drops. The start will be explained by the O.O.D at Drivers briefing.

23 COURSE DETAILS Including Rough Weather Course

Course Marks

Start/Finish

Between Pennington Sewage Mark (red pole with red witches hat on it) and Dunford a yellow racing buoy with a small pole and a cross on the top



Mark 1 / 9

Warden - Green buoy leave to starboard on outward leg – Port on return.



Mark 2 / 8

Bridge Buoy keeping buoy to port and starboard on return (do not go through the needles or close as there are rocks at this state of tide)

AWAITING FINAL RYA APPROVAL



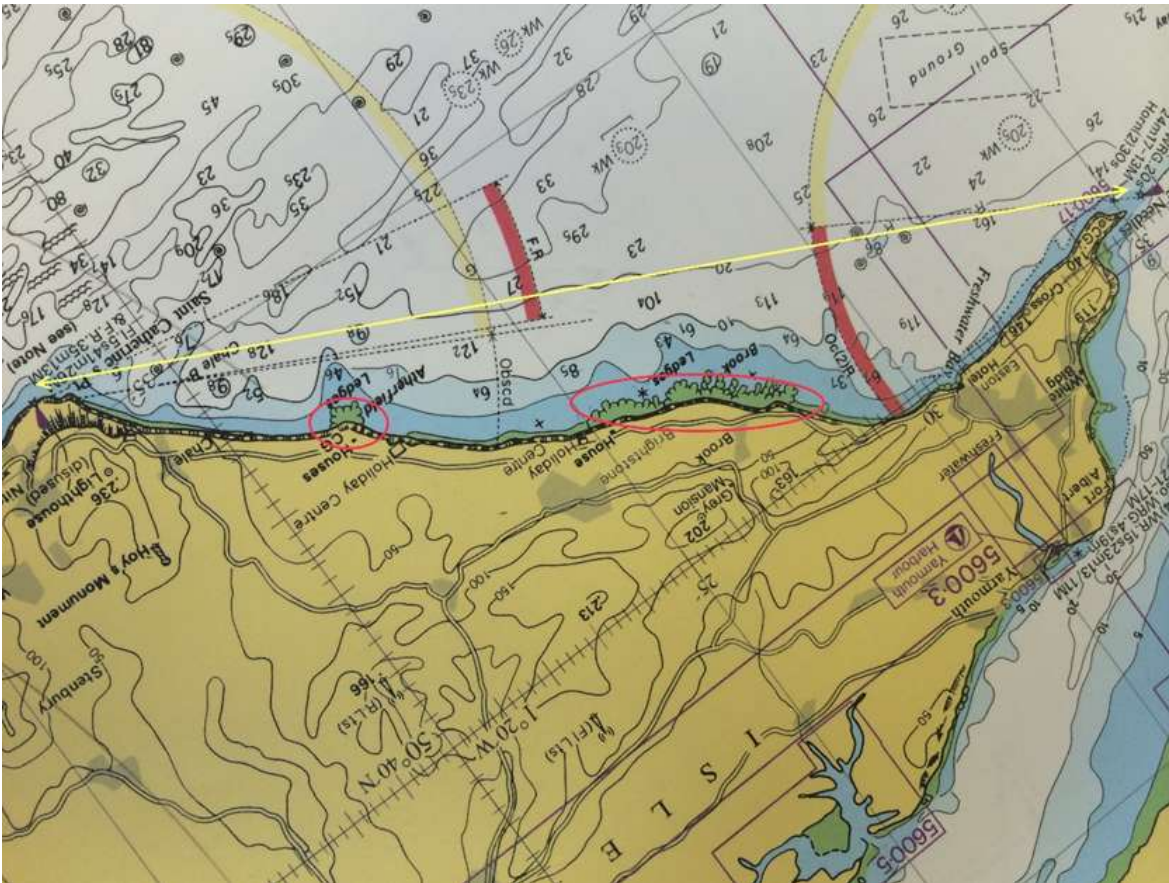
At Freshwater be cognisant of the rocks at Brook Ledge keeping a 1000m distance from land

Mark 3 / 7

St Catherines Head - There is no mark - you must round the headland keeping a recommended min. distance of 500m away.

Mark 4 / 6

Dunnose Head - There is no mark - you must round the headland keeping a recommended 500m away.



AWAITING FINAL DVA APPROVAL





Mark 5 Sandown Pier and a laid buoy to denote a gate – keep buoy to starboard.

(Current 2014)

Muster Area

Muster 100m from Start / finish line - mustering anti clockwise - The start procedure will be explained at briefing

Start Run

As per item 22 in Race Instructions

Lap/Finish Line

Between Pennington Sewage Mark (red pole with red witches hat on it) Dunford a yellow racing buoy with a small pole and a cross on the top



Start Boat and Finish boat – Pascoe International.

MARKS OF THE COURSE

Mark	Latitude	Longitude	Mark Description	Leave to
Start / Finish	50°43 38 N	01°31 54 W	Between red post with witches hat & Yellow racing mark use as a gate Warden - bearing 210 (T)	
Warden - bearing 210 (T)	50°41 48 N	01°33 55 W	Green metal starboard buoy Starboard and Port on return	Starboard and Port on return
Bridge Buoy - bearing 115 (T)	50°39 63 N	01°38 88 W	West Cardinal egg timer on top - yellow and black	Port and Starboard on return
St Catherine's Headland - bearing 255 (T)	50°34 40 N	01°18 40 W	Headland	
Dunnose Headland - bearing 019 (T)	50°35 75 N	01°10 70 W	Headland	
Sandown Pier – buoy	50°38 45 N	01°08 00 W	Between Pier and Buoy	Use as a turning gate. There will also be a Patrol boat with a flag.

LAPS

Mark	TO	Mark	Distance (NM)
Start / Finish	To	Mark 1	2.28
Mark 1	To	Mark 2	2.8
Mark 2	To	Mark 3	13.10
Mark 3	To	Mark 4	5.25
Mark 4	To	Mark 5	3.25
Then return			
		Total Distance	26.68 (49.41Km)

RACE DISTANCE

27 nautical miles each way total 54 nautical miles

ROUGH WEATHER COURSE:

MARKS OF THE COURSE

Mark	Latitude	Longitude	Mark Description	Leave to
Start / Finish - Dunford	50°43 38 N	01°31 54 W	Between red post with witches hat & Dunford - Yellow racing mark use as a gate	Dunford to Port
Hamstead Ledge	50°43.87 N	01°26.18 W	Green Starboard Mark	To Port
Salt Mead	50°44.52 N	01°23.04 W	Green Starboard Mark	To Port
West Lepe	50°45.24 N	01°24.09 W	Red Port hand Mark	To Port
Solent Bank	50°44.23 N	01°27.37 W	Red Port hand Mark	To Starboard
Sconce	50°42.53 N	01°24.07 W	Black / Yellow Northerly Cardinal	To Port

START LAP

Mark	TO	Mark	Distance (NM)	Bearings (T)
Start / Finish Run	To	Mark 2	3.45	083
Mark 2	To	Mark 3	2.10	253
Mark 3	To	Mark 4	1.00	048
Mark 4	To	Mark 5	2.30	244
Mark 5	To	Mark 6	2.80	253
		Total Distance	11.65 nm	

4 LAPS

Mark	TO	Mark	Distance (NM)	Bearings (T)
Mark 6	To	Mark 1	0.85	175
Mark 1	To	Mark 2	3.55	068
Mark 2	To	Mark 3	2.10	253
Mark 3	To	Mark 4	1.00	048
Mark 4	To	Mark 5	2.30	244
Mark 5	To	Mark 6	2.80	253
		Total Distance	12.60 nm x 4 =	50.40nm

START LAP 11.65 NM PLUS 4 LAPS OF THE COURSE – Total 62.05 Nautical Miles



- 1 - SCONCE
- 2 - HAMSTEAD LEDGE
- 3 - SALT MEAD
- 4 - WEST LEPE
- 5 - SOLENT BANK
- 6 - DUNFORD





Hamstead Ledge starboard channel buoy

Viewed from the adjacent square, this buoy marks the starboard side of the Solent as you approach from the west. The light characteristic is two green flashes every five seconds. Note the two masts at Rowridge [SZ4486 : Rowridge transmitter, Isle of Wight](#) and Chillerton Down [SZ4783 : Chillerton TV transmitter](#) in the distance.

AWAITING FINAL DVA APPROVAL





24 FLAG SIGNALS

All flag signals are fully described in RYA PB1 2014 General Racing Rules and Class specific rules where differences occur. All Competitors must have a full understanding of all flag signals.

If a competitor misses 2 red flags in any one race they will immediately be disqualified and referred to the RYA for further disciplinary action.

25 POST-RACE DECLARATION:

The Driver or Co-Driver must sign off at Race administration in accordance with Class specific rules. Failure to do so may result in exclusion from the results.

All Crew Members must report to Race Administration before the end of the event to sign off and collect race documentation.

26 POST-RACE SCRUTINEERING:

Crew members must be available with their craft and all relevant mandatory equipment required by class rules for post-race scrutineering if required up to one hour after the posting of the Results. One or more engines may be checked and fuel sampling may take place.

27 PENALTIES

Race Organisers may apply penalties referred to in class rules as well as additional penalties listed below

There will be a penalty of £50 for bad behaviour off the water and / or disqualification may be given by the race committee if local by-laws are not adhered too.

28 PROTESTS

In accordance with class specific rules in PB1 2014

A protest fee of £100.00 is applicable to this event

29 PRIZE GIVING:

Podium presentations will take place at RLYC on the balcony

Prize-giving will take place at **1 hour after the last race boat returns under its own power**

Dress code for Podium Presentations and Prize Giving - Team Clothing

30 TROPHIES:

Trophies will also be presented for the following categories: 1st 2nd and 3rd

Please note that Inflatable boats

- Do not always have a VHF radios on board but will have a mobile phone in a waterproof bag.
- Do not have a GPS although may have a handheld
- No compass unless a handheld
- If they fall in the water or capsize – safety boats are to observe unless a distress signal is used being: a) waving an orange flag – assistance needed or b) both hands waving above their heads – need medical assistance. The crew are allowed to re right the boats themselves and re start the engines
- As soon as outside assistance is used the boat and team are disqualified from the race
- A list of telephone numbers will be given to teams in case of an emergency

In the event of adverse weather or other factors and the race has to be curtailed.

If the race is stopped early each patrol / safety boat will red flag all race boats as per directive in race briefing. The patrol / safety boats at Sandown will start to sweep stopping all raceboats in their path to return to Lymington. If it is too rough then the option of Ventnor Harbour or Yaverland by Sandown could be used for shelter.

SAFETY EQUIPMENT ON RACE BOAT:

As per UIM P750 Rules: 564E.03 SAFETY EQUIPMENT

In a Long-haul event the following safety equipment is the minimum requirement and must be carried at all times. All equipment should be clearly marked with the boat number. The advance race instructions must state what equipment is required dependent on the type of Long-haul including the option to allow props and other maintenance equipment on the boat.

All equipment including water must come back complete.

Toolkit – flip kit with a minimum of: easy start spray, number 7 flexible socket, 3 x dry spark plugs, spark plug spanner, and Phillips screw driver – all to be kept in a dry sealed container. First Aid kit

Paddles x 2 (two) attached to the boat

Orange flag min 0.6 x 0.4 m and means of hoisting to indicate retirement

VHF radio or mobile phone in waterproof case – fully charged

Emergency water 2 x 1lt and 2 x energy bars (glucose or similar).

PLEASE BE AWARE IF YOU WANT TO TAKE WATER AND FOOD WITH YOU TO DRINK TAKE EXTRA – DO NOT USE YOUR SAFETY SUPPLY!

SAFETY INFORMATION

SAFETY TAKES PRIORITY OVER RACING AT ALL TIMES

All Race Boats must observe the International Rules for the Prevention of Collisions at Sea when encountering any other Non racing craft

- A) Swimmers, board sailors, private and commercial craft of all types of may be encountered. Competitors are reminded to keep a sharp look out at all times and to take the necessary action in accordance with the IRPCS Rules.
- B) Competitors are reminded to keep a sharp lookout at all times for any marine wildlife that may be in encountered in the vicinity of the race course and take the necessary avoiding action.
- C) Competitors are warned to remember their speed and the fact that other craft may not be fully aware or able to keep clear.
- D) Competitors are asked to bear in mind that Official Patrol & Rescue boats have no power to insist that any craft or swimmer keep clear of the course of the race. Advice can only be given for the safety of other craft and swimmers.
- E) International Code Flag "A" denotes "DIVERS". Competitors must give a wide clearance of at least 100mtrs.
- F) The Course will be patrolled by Official Patrol & Rescue Boats with official Observer boats in the vicinity of certain race marks, other race marks may be observed from the shore
- G) Any Official Patrol/Rescue boat may wave a yellow flag to give warning of imminent danger in its vicinity. Competitors seeing this signal are to acknowledge the signal, proceed with caution, not overtake other race boats whilst in the area of the incident and keep clear of the danger area. Any competitor who ignores or abuses the yellow flag may be penalised.

AWAITING FINAL RYA APPROVAL

Please note the website below which will give you all information regarding Lymington and facilities available: <http://www.lymingtonharbour.co.uk/Facilities/Facilities.htm>

ACCOMMODATION:

Accommodation at Lymington for Camping – 3 miles from RLYC

<http://www.hurstviewleisure.co.uk/open-camp.htm>

LYMINGTON HARBOUR BYELAWS:

<http://www.lymingtonharbour.co.uk/Byelaws/Lymington%20Harbour%20Commissioners%20Byelaws.pdf>

GOOD SITE TO SEE IF YOU KNOW YOUR COLLISION AT SEA REGULATIONS

<http://www.sailtrain.co.uk/lrpcs/>